

# WHPF, WHDHP

## Технические характеристики

### По вопросам продаж и поддержки обращайтесь:

Алматы (7273)495-231  
Ангарск (3955)60-70-56  
Архангельск (8182)63-90-72  
Астрахань (8512)99-46-04  
Барнаул (3852)73-04-60  
Белгород (4722)40-23-64  
Благовещенск (4162)22-76-07  
Брянск (4832)59-03-52  
Владивосток (423)249-28-31  
Владикавказ (8672)28-90-48  
Владимир (4922)49-43-18  
Волгоград (844)278-03-48  
Вологда (8172)26-41-59  
Воронеж (473)204-51-73  
Екатеринбург (343)384-55-89  
Иваново (4932)77-34-06  
Ижевск (3412)26-03-58  
Иркутск (395)279-98-46  
Казань (843)206-01-48

Россия +7(495)268-04-70

Калининград (4012)72-03-81  
Калуга (4842)92-23-67  
Кемерово (3842)65-04-62  
Киров (8332)68-02-04  
Коломна (4966)23-41-49  
Кострома (4942)77-07-48  
Краснодар (861)203-40-90  
Красноярск (391)204-63-61  
Курск (4712)77-13-04  
Курган (3522)50-90-47  
Липецк (4742)52-20-81  
Магнитогорск (3519)55-03-13  
Москва (495)268-04-70  
Мурманск (8152)59-64-93  
Набережные Челны (8552)20-53-41  
Нижний Новгород (831)429-08-12  
Новокузнецк (3843)20-46-81  
Ноябрьск (3496)41-32-12  
Новосибирск (383)227-86-73

Киргизия +996(312)-96-26-47

Омск (3812)21-46-40  
Орел (4862)44-53-42  
Оренбург (3532)37-68-04  
Пенза (8412)22-31-16  
Петрозаводск (8142)55-98-37  
Псков (8112)59-10-37  
Пермь (342)205-81-47  
Ростов-на-Дону (863)308-18-15  
Рязань (4912)46-61-64  
Самара (846)206-03-16  
Саранск (8342)22-96-24  
Санкт-Петербург (812)309-46-40  
Саратов (845)249-38-78  
Севастополь (8692)22-31-93  
Симферополь (3652)67-13-56  
Смоленск (4812)29-41-54  
Сочи (862)225-72-31  
Ставрополь (8652)20-65-13  
Сургут (3462)77-98-35

Казахстан +7(7172)727-132

Сыктывкар (8212)25-95-17  
Тамбов (4752)50-40-97  
Тверь (4822)63-31-35  
Тольятти (8482)63-91-07  
Томск (3822)98-41-53  
Тула (4872)33-79-87  
Тюмень (3452)66-21-18  
Ульяновск (8422)24-23-59  
Улан-Удэ (3012)59-97-51  
Уфа (347)229-48-12  
Хабаровск (4212)92-98-04  
Чебоксары (8352)28-53-07  
Челябинск (351)202-03-61  
Череповец (8202)49-02-64  
Чита (3022)38-34-83  
Якутск (4112)23-90-97  
Ярославль (4852)69-52-93

# WHPF PU

TECHNICAL WATER STORAGE TANK FOR HEATING WATER OR CHILLED WATER  
IDEAL FOR COMBINATION WITH AIR-TO-WATER HEAT PUMP SYSTEMS



- ▶ **Thermometer and holders for probe included in the supply**
- ▶ **Wall mounting possible for WHPF 25 PU model**
- ▶ **Easy installation**
  - ) External paint
  - ) Untreated internal surface
  - ) Injected rigid polyurethane thermal insulation
  - ) Covering in white sky

Available in the following capacities (l):



Model	Code	Energy efficiency class	Heat loss (S)	Storage volume (V)	Dimensions D x H	Empty gross weight
			W	l	mm	kg
25 PU	DBOLLPDC00	<b>A</b>	19	24	380x451	19
50 PU	DBOLLPDC01	<b>B</b>	34	57	380x935	29
100 PU	DBOLLPDC02	<b>B</b>	50	123	510x1095	39
200 PU (*)	DBOLLPDC08	<b>C</b>	68	203	550x1395	48
300 PU (*)	DBOLLPDC09	<b>C</b>	82	277	600x1560	59
500 PU (*)	DBOLLPDC10	<b>C</b>	114	473	700x1855	99

Technical data	um	25 PU	50 PU	100 PU	200 PU (*)	300 PU (*)	500 PU (*)
Insulation thickness	mm	40	50	50	50	50	50
Empty net weight	kg	17,5	25	35	43	54	91
Maximum working pressure	bar	6	6	6	6	6	6
Maximum working temperature	°C	95	95	95	95	95	95

(\*) Models 200, 300 and 500 are available on request



WHPF 25 PU



WHPF 50 - 100 PU

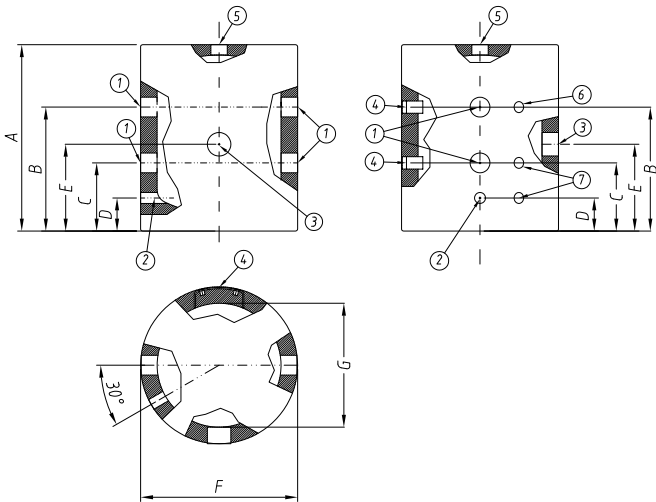


WHPF 200 - 300 - 500 PU

Warning: images to be considered representative and not to scale

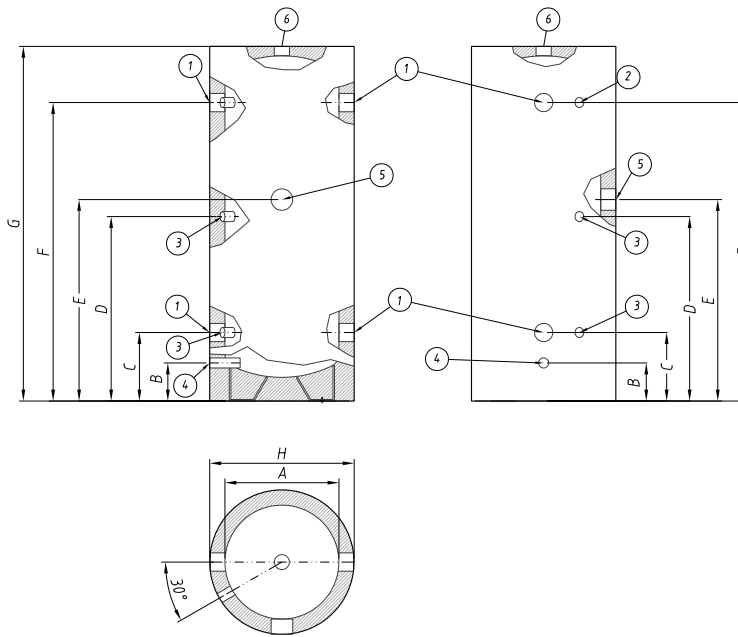
DIMENSIONS AND CONNECTION CENTRE DISTANCES

mod. WHPF-25-PU



Ref.	25 PU
A	451 mm
B	300 mm
C	165 mm
D	80 mm
E	210 mm
F	380 mm
G	300 mm
1 - Heating circuit inlets - outlets	1 1/4" F
2 - Drain	1/2" F
3 - Heating element connection	1 1/2" F
4 - Supports for fastening with brackets	-
5 - Vent	1" F
6 - Thermometer (included in the supply)	1/2" F
7 - Holder for probe (included in the supply)	1/2" F

mod. WHPF 50-100 - 200 - 300 - 500 PU



Ref.	50 PU	100 PU	200 PU	300 PU	500 PU
A	300 mm	400 mm	450 mm	500 mm	600 mm
B	100 mm	100 mm	105 mm	120 mm	135 mm
C	180 mm	185 mm	215 mm	235 mm	240 mm
D	485 mm	560 mm	705 mm	785 mm	925 mm
E	530 mm	605 mm	750 mm	830 mm	970 mm
F	785 mm	935 mm	1200 mm	1340 mm	1610 mm
G	935 mm	1095 mm	1395 mm	1560 mm	1855 mm
H	380 mm	510 mm	550 mm	600 mm	700 mm
1 - Heating circuit inlets - outlets	1 1/4" F				
2 - Thermometer (included)	1/2" F				
3 - Holder for probe (included)	1/2" F				
4 - Drain	1/2" F			3/4" F	
5 - Heating element connection	1 1/2" F				
6 - Vent	1" F		1 1/4" F		

# WHPF PU E

TECHNICAL WATER STORAGE TANK FOR HEATING WATER OR CHILLED WATER  
IDEAL FOR COMBINATION WITH AIR-TO-WATER HEAT PUMP SYSTEMS



- ▶ **Thermometer and holders for probe included in the supply**
- ▶ **Wall mounting is possible for model WHPF 24 PU E**
- ▶ **Easy installation**
  - ) Untreated internal surface
  - ) Injected rigid polyurethane thermal insulation
  - ) Covering in grey skai

Available in the following capacities (l):



Model	Code	Energy efficiency class	Heat loss (S)	Storage volume (V)	Dimensions D x H	Empty gross weight
			W	l	mm	kg
<b>24 PU E</b>	DBOLLPDC13	<b>A</b> →	18	24	410x555	10
<b>50 PU E</b>	DBOLLPDC11	<b>A</b> →	26	50	410x890	19,5
<b>100 PU E</b>	DBOLLPDC12	<b>B</b> →	40	96	510x895	37,5

Technical data	um	24 PU E	50 PU E	100 PU E
Energy efficiency class	-	<b>A</b> →	<b>A</b> →	<b>B</b> →
Insulation thickness	mm	65	50	55
Heat loss	W	18	26	40
Hot water storage	l	24	50	96
Dimensions (diameter x height)	mm	410x555	410x890	510x895
Empty net weight	kg	8,5	17,5	35
Empty gross weight	kg	10	19,5	37,5
Maximum working pressure	bar	10	10	10
Maximum working temperature	°C	95	95	95



WHPF 24 PU E

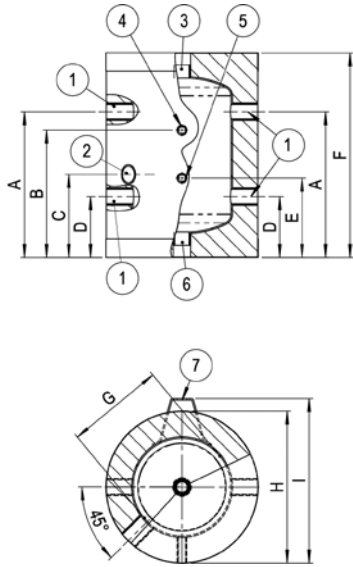


WHPF 50 - 100 PU E

Warning: images to be considered representative and not to scale

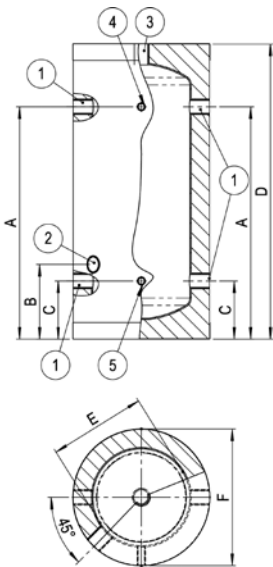
DIMENSIONS AND CONNECTION CENTRE DISTANCES

mod. WHPF 24 PU E



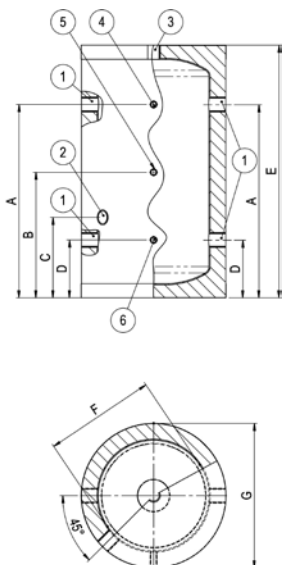
Ref.	24 PU E
A	390 mm
B	340 mm
C	225 mm
D	160 mm
E	210 mm
F	555 mm
G	280 mm
H	410 mm
I	446 mm
1 - Heating circuit inlets - outlets	1 1/4" F
2 - Connection for electrical resistance	1 1/2" F
3 - Vent	1 1/4" F
4 - Thermometer (supplied as standard)	1/2" F
5 - Thermowell (supplied as standard)	1/2" F
6 - Connection (closure cap supplied as standard)	1 1/4" F
7 - Holder for probe (included in the supply)	-

mod. WHPF 50 PU E



Ref.	50 PU E
A	700 mm
B	225 mm
C	175 mm
D	890 mm
E	292 mm
F	410 mm
1 - Heating circuit inlets - outlets	1 1/4" F
2 - Connection for electrical resistance	1 1/2" F
3 - Vent	1 1/4" F
4 - Thermometer (supplied as standard)	1/2" F
5 - Thermowell (supplied as standard)	1/2" F

mod. WHPF 100 PU E



Ref.	100 PU E
A	685 mm
B	445 mm
C	285 mm
D	205 mm
E	895 mm
F	392 mm
G	512 mm
1 - Heating circuit inlets - outlets	1 1/2" F
2 - Connection for electrical resistance	1 1/2" F
3 - Vent	1 1/4" F
4 - Thermometer (supplied as standard)	1/2" F
5 - Thermowell (supplied as standard)	1/2" F
6 - Connection	1/2" F

# WHDHP SS

SINGLE-COIL STORAGE TANK FOR DHW  
SPECIFICALLY FOR COMBINATION WITH AIR-TO-WATER HEAT PUMP SYSTEMS



- ▶ **Thermometer and holders for probe included in the supply**
- ▶ **Magnesium anode for anodic protection**
- ▶ **Wide heat exchange surface - high efficiency coil**
- ▶ **Easy installation**
- ▶ **Inspection flange**
- ▶ **It can be integrated with solar coil (extra accessory), installable in the inspection flange**
- ) External paint
- ) Vitrification treatment coated internal surface
- ) Carbon steel coil
- ) Injected rigid polyurethane thermal insulation
- ) Covering in white sky

Available in the following capacities (l):



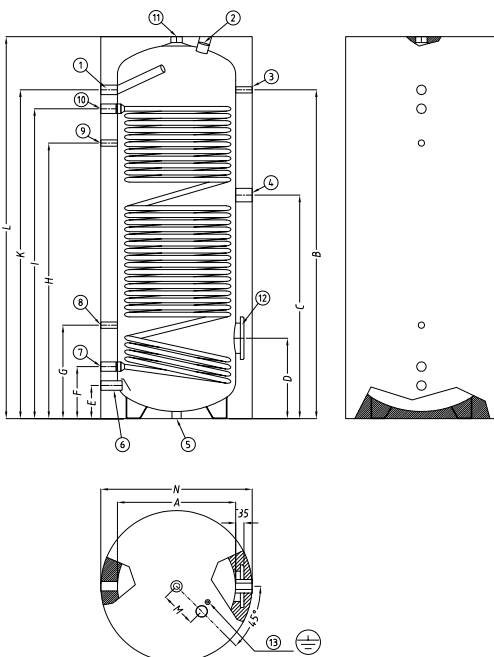
Warning: images to be considered representative and not to scale

Model	Code	Energy efficiency class	Heat loss (S)	Storage volume (V)	Coil area	Dimensions D x H	Empty gross weight
			W	l	m <sup>2</sup>	mm	kg
<b>200 SS</b>	DBOLLPDC03	<b>B</b>	51	190	3	640x1215	96
<b>300 SS</b>	DBOLLPDC04	<b>B</b>	63	263	4	640x1615	130
<b>500 SS</b>	DBOLLPDC05	<b>B</b>	80	470	6	790x1705	181

Technical data	um	200 SS	300 SS	500 SS
Insulation thickness	mm	70	70	70
Coil water content	l	17	23	51
Empty net weight	kg	90	124	175
Maximum DHW working pressure	bar	10	10	10
Maximum CH working pressure	bar	10	10	10
Maximum working temperature	°C	95	95	95

## DIMENSIONS AND CONNECTION CENTRE DISTANCES

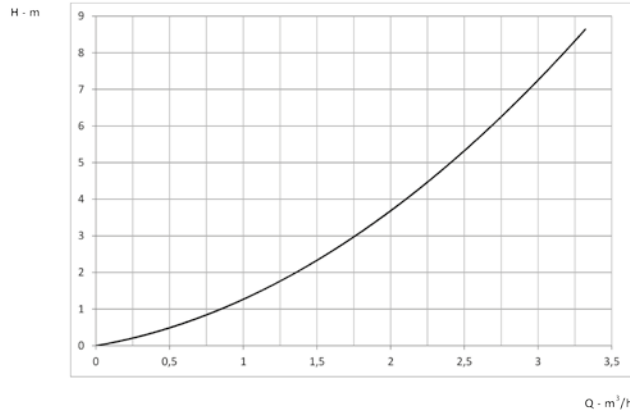
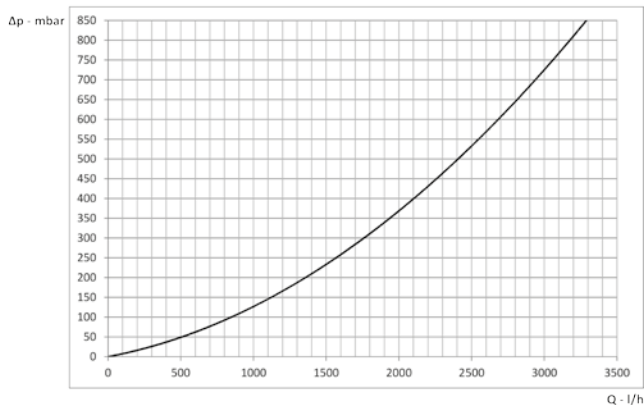
mod. WHDHP-200-300-500-SS



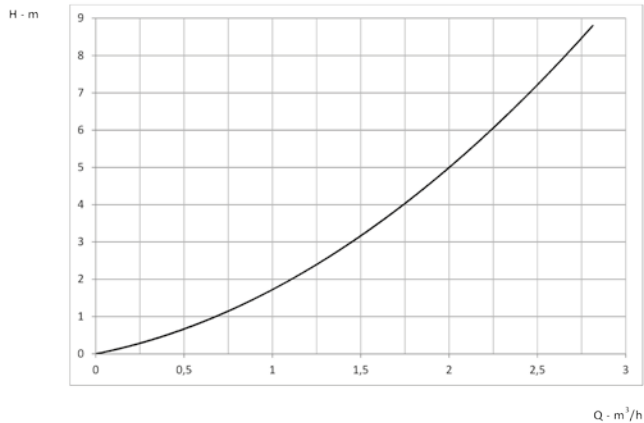
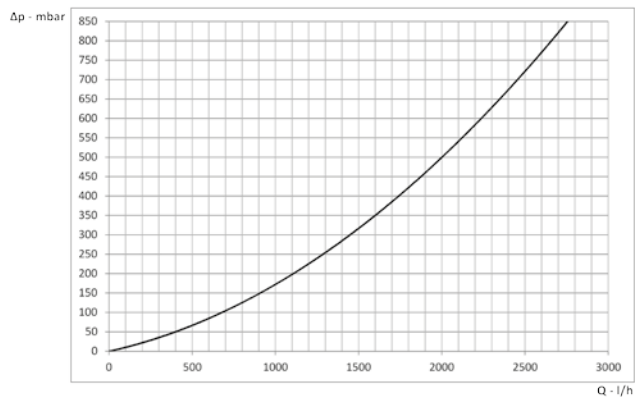
Ref.	200 SS	300 SS	500 SS
A	500 mm	500 mm	650 mm
B	995 mm	1390 mm	1425 mm
C	735 mm	945 mm	970 mm
D	320 mm	340 mm	370 mm
E	140 mm	140 mm	185 mm
F	220 mm	220 mm	265 mm
G	370 mm	395 mm	425 mm
H	835 mm	1165 mm	1170 mm
I	990 mm	1310 mm	1325 mm
K	1070 mm	1390 mm	1415 mm
L	1215 mm	1615 mm	1705 mm
M	150 mm	150 mm	150 mm
N	640 mm	640 mm	790 mm
1 - DHW flow	1" F		
2 - Magnesium anode (included)	1 1/4" F		
3 - Thermometer (included)	1/2" F		
4 - Heating element connection	1 1/2" F		
5 - Bench connection	1/2" F		
6 - Cold water inlet	1" F		
7 - Coil return	1" F		1 1/4" F
8 - Holder for probe	1/2" F		
9 - Recirculation	1/2" F		
10 - Coil flow	1" F		1 1/4" F
11 - DHW flow	1 1/4" F		
12 - Flange	180/120		
13 - Grounding system	M6 nut		

COIL PRESSURE LOSS

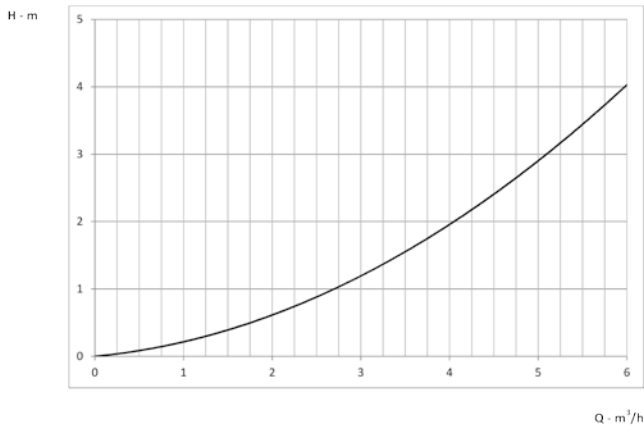
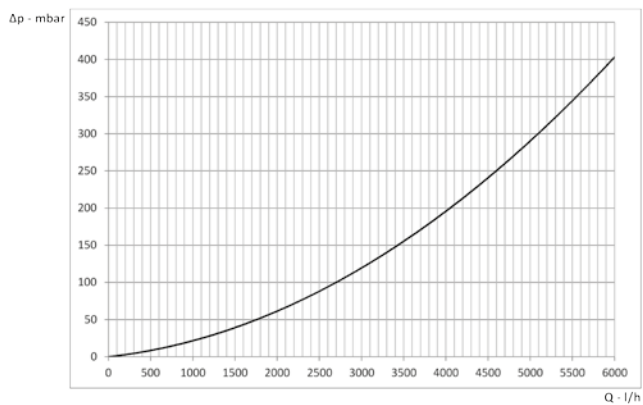
WHDHP 200 SS



WHDHP 300 SS



WHDHP 500 SS



# WHDHP SSH

COMBINED HYBRID STORAGE TANK FOR DHW AND PUFFER FOR TECHNICAL WATER SPECIFICALLY FOR COMBINATION WITH AIR-TO-WATER HEAT PUMP SYSTEMS



- ▶ **Space-saving compact installation: buffer tank serves as the base for the storage tank, vertically developed**
- ▶ **Thermometer and holders for probe included in the supply**
- ▶ **Magnesium anode for anodic protection**
- ▶ **Wide heat exchange surface - high efficiency coil**
- ▶ **Inspection flange**
- ▶ **It can be integrated with solar coil (extra accessory), installable in the inspection flange**
- ) External paint
- ) Vitrification treatment coated internal surface
- ) Carbon steel coil
- ) Injected rigid polyurethane thermal insulation
- ) Covering in white sky

Available in the following capacities (l):



Warning: images to be considered representative and not to scale

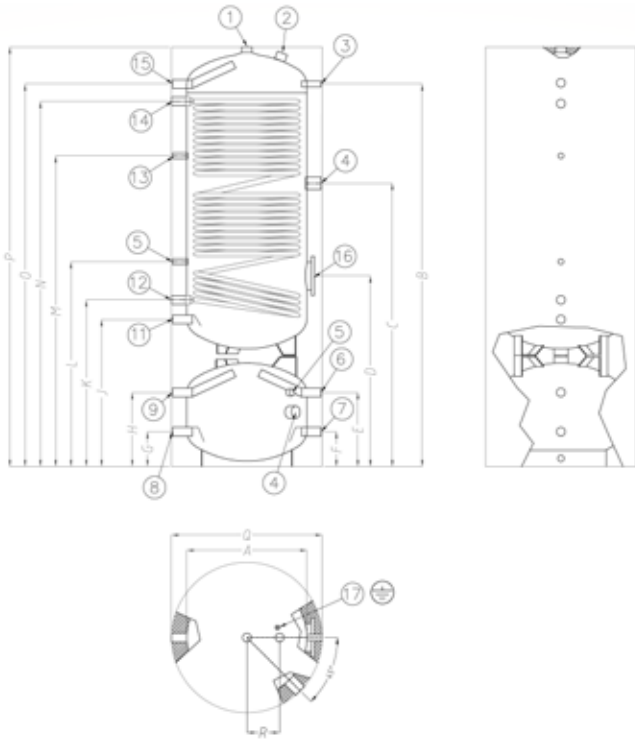
Model	Code	Energy efficiency class	Heat loss (S)	DHW storage tank volume	Coil area	Buffer tank hot water storage	Dimensions D x H	Empty gross weight
			W	l	m <sup>2</sup>	l	mm	kg
<b>300 SSH</b>	DBOLLPDC06	<b>B</b> →	73	270	3,3	80	690x1925	156
<b>500 SSH</b>	DBOLLPDC07	<b>B</b> →	84	450	6	74	790x2040	207

Technical data	um	300 SSH	500 SSH
Insulation thickness	mm	70	70
Coil water content	l	20,2	51,5
Empty net weight	kg	150	200
Maximum DHW / coil working pressure	bar	10	10
Maximum buffer tank working pressure	bar	6	6
Maximum working temperature	°C	95	95



DIMENSIONS AND CONNECTION CENTRE DISTANCES

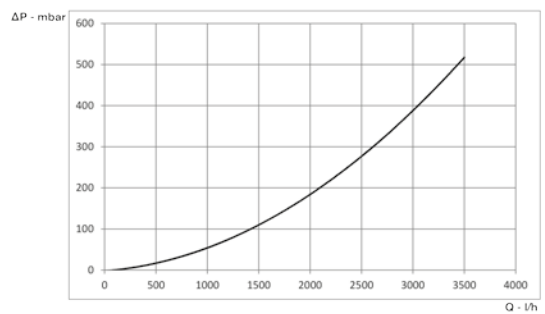
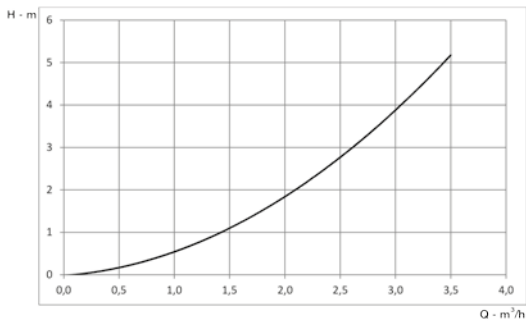
mod. WHDHP-300-500-SSH



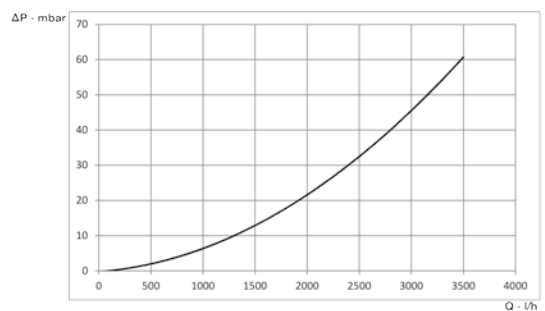
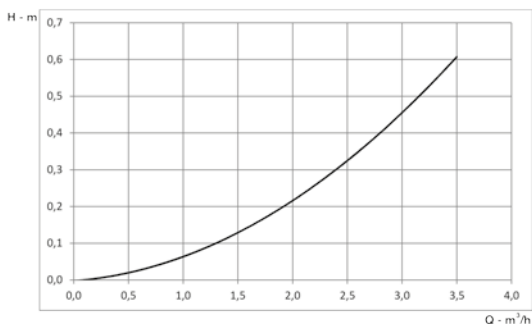
Ref.	300 SSH	500 SSH
A	550 mm	650 mm
B	1755 mm	1850 mm
C	1300 mm	1350 mm
D	875 mm	750 mm
E	340 mm	235 mm
F	160 mm	135 mm
G	160 mm	135 mm
H	340 mm	235 mm
I	505 mm	375 mm
J	675 mm	565 mm
K	765 mm	650 mm
L	940 mm	805 mm
M	1425 mm	1520 mm
N	1675 mm	1710 mm
O	1755 mm	1850 mm
P	1925 mm	2040 mm
Q	690 mm	790 mm
R	150 mm	150 mm
1 - DHW flow		1 1/4" F
2 - Anode		1 1/4" F
3 - Thermometer (included)		1/2" F
4 - Heating element		1 1/2" F
5 - Holder for probe (included)		1/2" F
6 - Delivery from heat pump		1" F
7 - Return to heat pump		1" F
8 - System return line		1" F
9 - System delivery line		1" F
11 - Cold water inlet		1" F
12 - Coil return		1 1/4" F
13 - Recirculation		1/2" F
14 - Coil flow		1" F
15 - DHW flow		1" F
16 - Flange		180/120 mm
17 - Grounding system		M6 nut

COIL PRESSURE LOSS




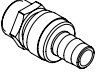


WHDHP 300 SSH



WHDHP 500 SSH



## ACCESSORIES FOR HEAT PUMP TANKS

Item	Description	Code
	1.5 kW heating element kit 340 mm-long heating element	DKRESELE00
	2 kW heating element kit 390 mm-long heating element	DKRESELE01
	3 kW heating element kit 390 mm-long heating element	DKRESELE02
	1/2" vent tap kit	DKRUBINE01
	Temperature probe for storage tank L 2 m (*)	DKSONDAB00
	Flange kit with heating element connection	DKFLABOL00

(\*) For PROCIDA heat pumps the temperature probe is supplied as standard.

### COMBINATION OF HEATING ELEMENTS - STORAGE TANKS

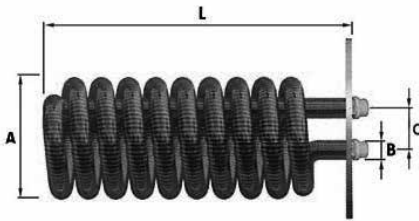
Description	Code	1.5 kW heating element DKRESELE00	2 kW heating element DKRESELE01	3 kW heating element DKRESELE02	Heating element flange kit DKFLABOL00
WHPF 25 PU	DBOLLPDC00	●			
WHPF 50 PU	DBOLLPDC01	●			
WHPF 100 PU	DBOLLPDC02	●	●	●	
WHPF 200 PU	DBOLLPDC08	●	●	●	
WHPF 300 PU	DBOLLPDC09	●	●	●	
WHPF 500 PU	DBOLLPDC10	●	●	●	
WHPF 24 PU E	DBOLLPDC13	●			
WHPF 50 PU E	DBOLLPDC11	●			
WHPF 100 PU E	DBOLLPDC12	●	●	●	
WHDHP 200 SS	DBOLLPDC03	●	●	●	●
WHDHP 300 SS	DBOLLPDC04	●	●	●	●
WHDHP 500 SS	DBOLLPDC05	●	●	●	●
WHDHP 300 SSH	DBOLLPDC06	●	●	●	●
WHDHP 500 SSH	DBOLLPDC07	●	●	●	●

# COIL FOR SOLAR ENERGY




Removable coil for solar energy, complete with flange, tinned copper coil, flange cover and bolts. It can be combined with water tanks for the production of domestic hot water **WHDHP SS** and **WHDHP SSH**.

- ) **Coil for solar energy 24 kW:** Combinable with 200-300 litre storage tanks
- ) **Coil for solar energy 36 kW:** Combinable with 500 litre storage tanks



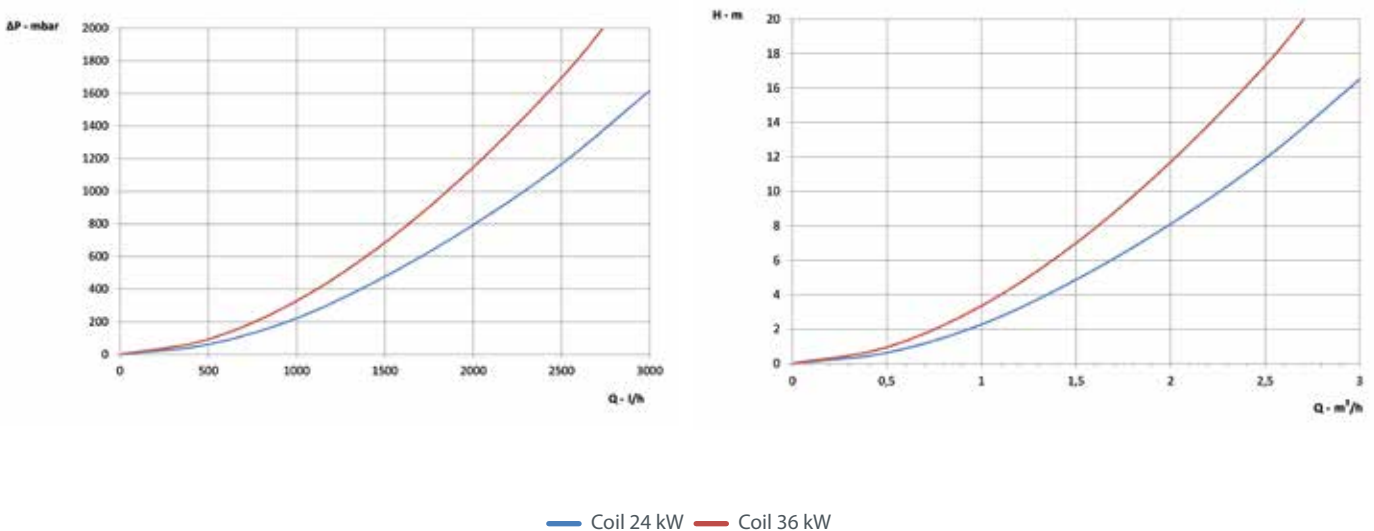
Coil for solar energy		24 kW	36 kW
Coil area	m <sup>2</sup>	0,80	1,21
Coil water content	litres	0,7	1,4
Power input	kW	24	36
Flow needed by the coil 80-60 °C	m <sup>3</sup> /h	1	1,6
<b>A</b>	DN	100	100
<b>B</b>	inches	3/4	3/4
<b>C</b>	mm	60	80
<b>L</b>	mm	400	550
Code		DKSERSOL00	DKSERSOL01

Item	Description	Code
	Well for double probe (compulsory for coils combined with solar panels) The well should replace the probe well opposite to the coil insertion flange on the water tank	DKPOZZET00

Description	Code	Coil 24 kW DKSERSOL00	Coil 36 kW DKSERSOL01	Double probe well DKPOZZET00*
WHDHP 200 SS	DBOLLPDC03	●		●
WHDHP 300 SS	DBOLLPDC04	●		●
WHDHP 500 SS	DBOLLPDC05	●	●	●
WHDHP 300 SSH	DBOLLPDC06	●		●
WHDHP 500 SSH	DBOLLPDC07	●	●	●

(\*) The accessory is compulsory for coils combined with solar panels

## SOLAR COIL PRESSURE LOSS



**По вопросам продаж и поддержки обращайтесь:**

Алматы (7273)495-231  
Ангарск (3955)60-70-56  
Архангельск (8182)63-90-72  
Астрахань (8512)99-46-04  
Барнаул (3852)73-04-60  
Белгород (4722)40-23-64  
Благовещенск (4162)22-76-07  
Брянск (4832)59-03-52  
Владивосток (423)249-28-31  
Владикавказ (8672)28-90-48  
Владимир (4922)49-43-18  
Волгоград (844)278-03-48  
Вологда (8172)26-41-59  
Воронеж (473)204-51-73  
Екатеринбург (343)384-55-89  
Иваново (4932)77-34-06  
Ижевск (3412)26-03-58  
Иркутск (395)279-98-46  
Казань (843)206-01-48

Калининград (4012)72-03-81  
Калуга (4842)92-23-67  
Кемерово (3842)65-04-62  
Киров (8332)68-02-04  
Коломна (4966)23-41-49  
Кострома (4942)77-07-48  
Краснодар (861)203-40-90  
Красноярск (391)204-63-61  
Курск (4712)77-13-04  
Липецк (4742)52-20-81  
Магнитогорск (3519)55-03-13  
Москва (495)268-04-70  
Мурманск (8152)59-64-93  
Набережные Челны (8552)20-53-41  
Нижний Новгород (831)429-08-12  
Новокузнецк (3843)20-46-81  
Ноябрьск (3496)41-32-12  
Новосибирск (383)227-86-73

Омск (3812)21-46-40  
Орел (4862)44-53-42  
Оренбург (3532)37-68-04  
Пенза (8412)22-31-16  
Петрозаводск (8142)55-98-37  
Псков (8112)59-10-37  
Пермь (342)205-81-47  
Ростов-на-Дону (863)308-18-15  
Рязань (4912)46-61-64  
Самара (846)206-03-16  
Саранск (8342)22-96-24  
Санкт-Петербург (812)309-46-40  
Саратов (845)249-38-78  
Севастополь (8692)22-31-93  
Симферополь (3652)67-13-56  
Смоленск (4812)29-41-54  
Сочи (862)225-72-31  
Ставрополь (8652)20-65-13  
Сургут (3462)77-98-35

Сыктывкар (8212)25-95-17  
Тамбов (4752)50-40-97  
Тверь (4822)63-31-35  
Тольятти (8482)63-91-07  
Томск (3822)98-41-53  
Тула (4872)33-79-87  
Тюмень (3452)66-21-18  
Ульяновск (8422)24-23-59  
Улан-Удэ (3012)59-97-51  
Уфа (347)229-48-12  
Хабаровск (4212)92-98-04  
Чебоксары (8352)28-53-07  
Челябинск (351)202-03-61  
Череповец (8202)49-02-64  
Чита (3022)38-34-83  
Якутск (4112)23-90-97  
Ярославль (4852)69-52-93

Россия +7(495)268-04-70

Киргизия +996(312)-96-26-47

Казахстан +7(7172)727-132